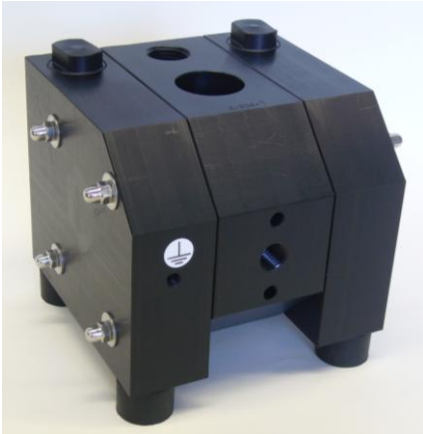




Holland Air Pumps bv®

# ALMATEC CX130 - 1 1/4" Plastic Pump



## WETTED HOUSINGS

**Material**  
PE conductive

**Ship Wt**  
10 kg (22 lbs)

## NON-WETTED HOUSINGS

**Description**  
Center Section  
Air Valve

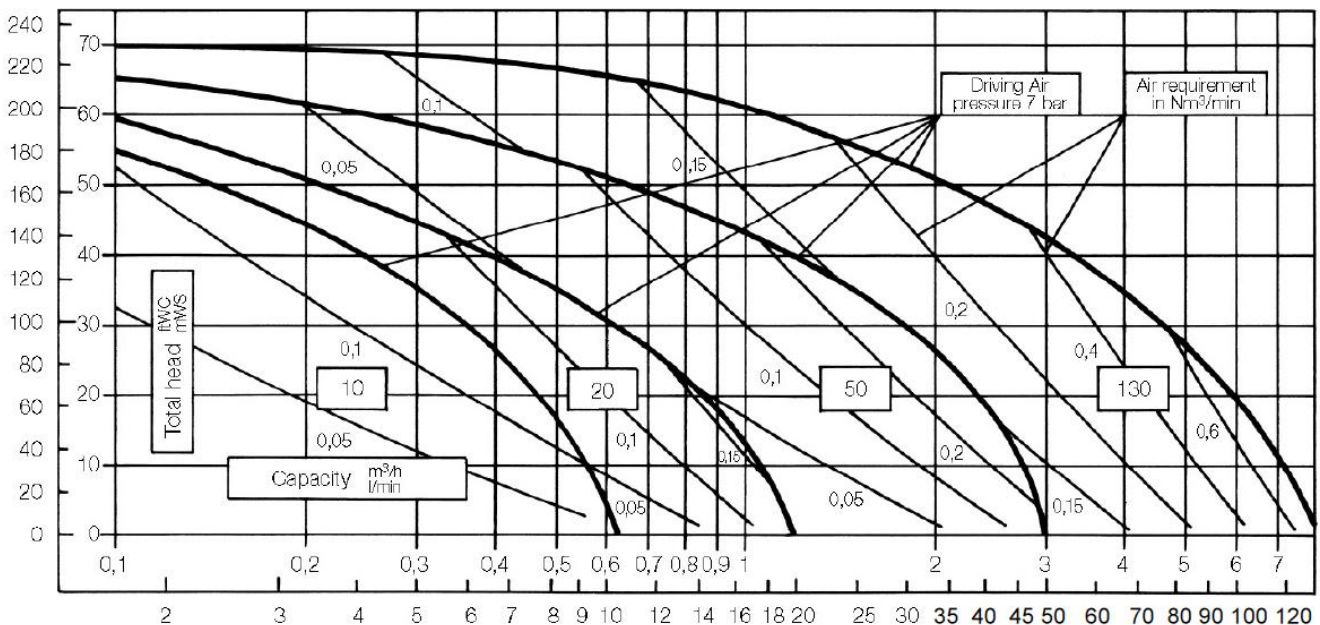
**Material**  
PE conductive  
PETP

## ELASTOMER OPTIONS

**Material**  
EPDM™  
PTFE  
NBR

**Temperature limits**  
-51.1 (-60) to +137.8 (+280) °C (F°)  
+4.4 (+40) to +104.4 (+220) °C (F°)  
-12.2 (+10) to +82.2 (+180) °C (F°)

**MAX FLOW RATE:** 130 LPM (34 GPM)  
**MAX PRESSURE:** 7 BAR (100 PSI)  
**MAX DIAMETER SOLIDS:** 4 mm (0.16")  
**MAX SUCTION LIFT CAPABILITY:**  
4.5 m (14.8') Dry, 9 m (29.5 ') Wet



**WILDEN** ALMATEC®

## HOLLAND AIR PUMPS BV

De Schepers 265, NL-5688 HP Oirschot, The Netherlands  
T +31 499 551000, F +31 499 551005  
E-mail: info@hollandairpumps.nl