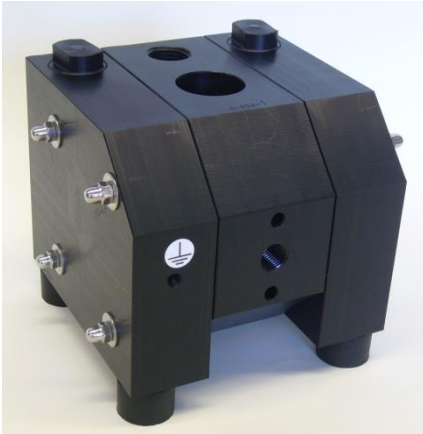




Holland Air Pumps bv®

ALMATEC CX10 – 3/8" Plastic Pump



WETTED HOUSINGS

Material
PE conductive

Ship Wt
1.2 kg (2.6 lbs)

NON-WETTED HOUSINGS

Description
Center Section
Air Valve

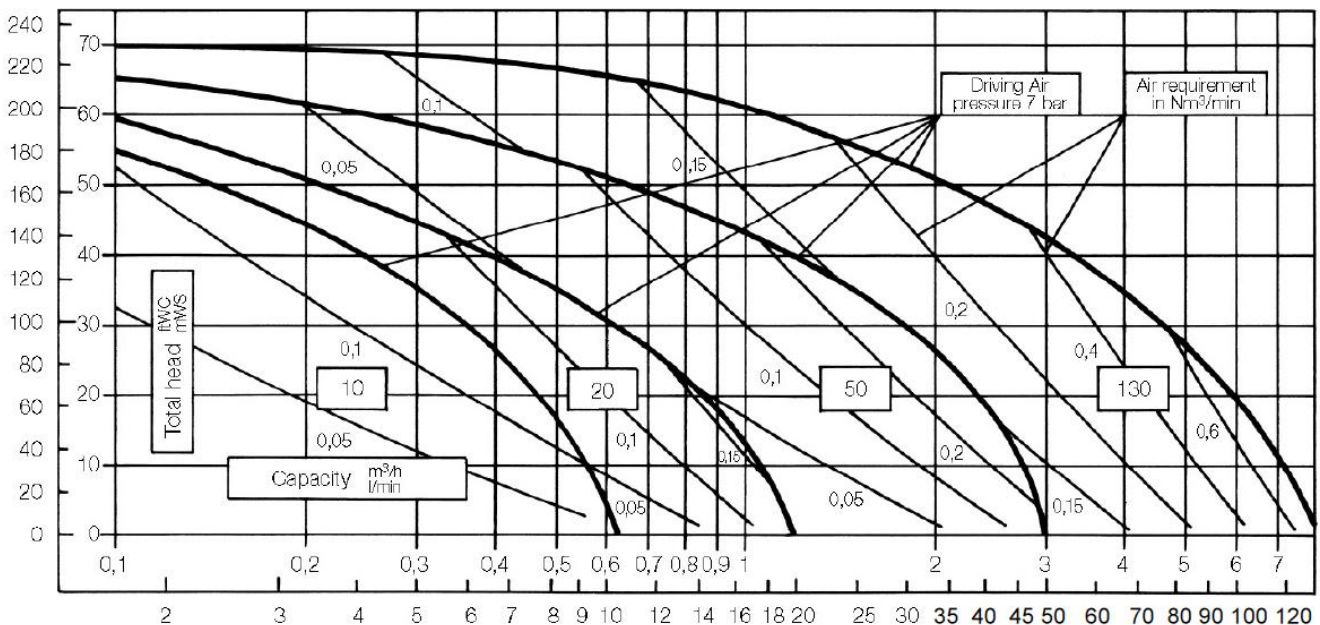
Material
PE conductive
PETP

ELASTOMER OPTIONS

Material
EPDM™
PTFE
NBR

Temperature limits
-51.1 (-60) to +137.8 (+280) °C (F°)
+4.4 (+40) to +104.4 (+220) °C (F°)
-12.2 (+10) to +82.2 (+180) °C (F°)

MAX FLOW RATE: 10 LPM (2.6 GPM)
MAX PRESSURE: 7 BAR (100 PSI)
MAX DIAMETER SOLIDS: 1.05 mm (0.06")
MAX SUCTION LIFT CAPABILITY:
0.7 m (2.3') Dry, 8 m (26.2 ') Wet



WILDEN ALMATEC®

HOLLAND AIR PUMPS BV

De Scheper 260, NL-5688 HP Oirschot, The Netherlands
T +31 499 551000, F +31 499 551005
E-mail: info@hollandairpumps.nl